



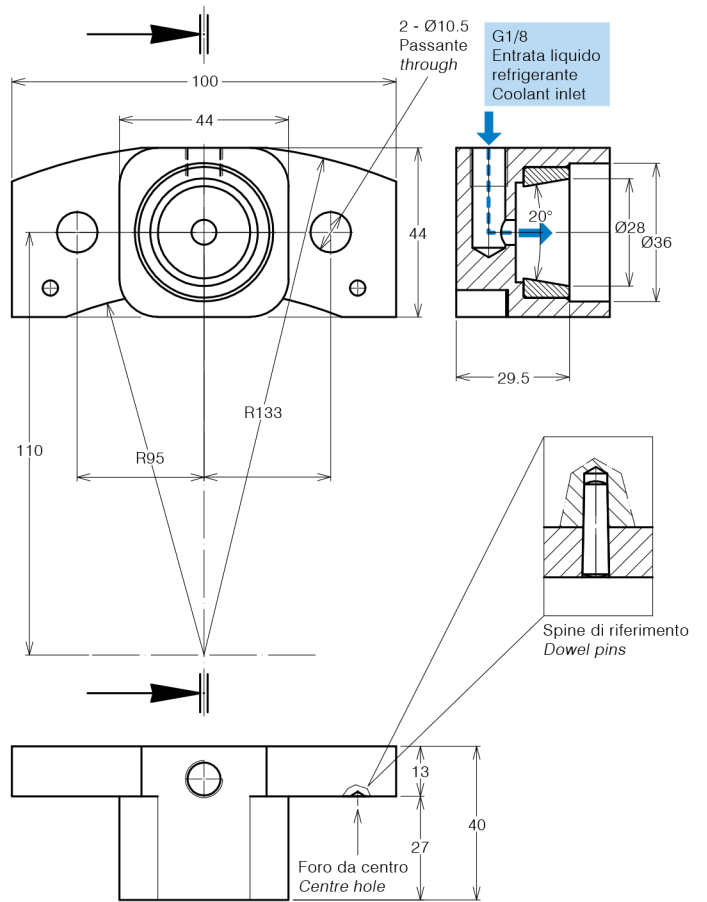
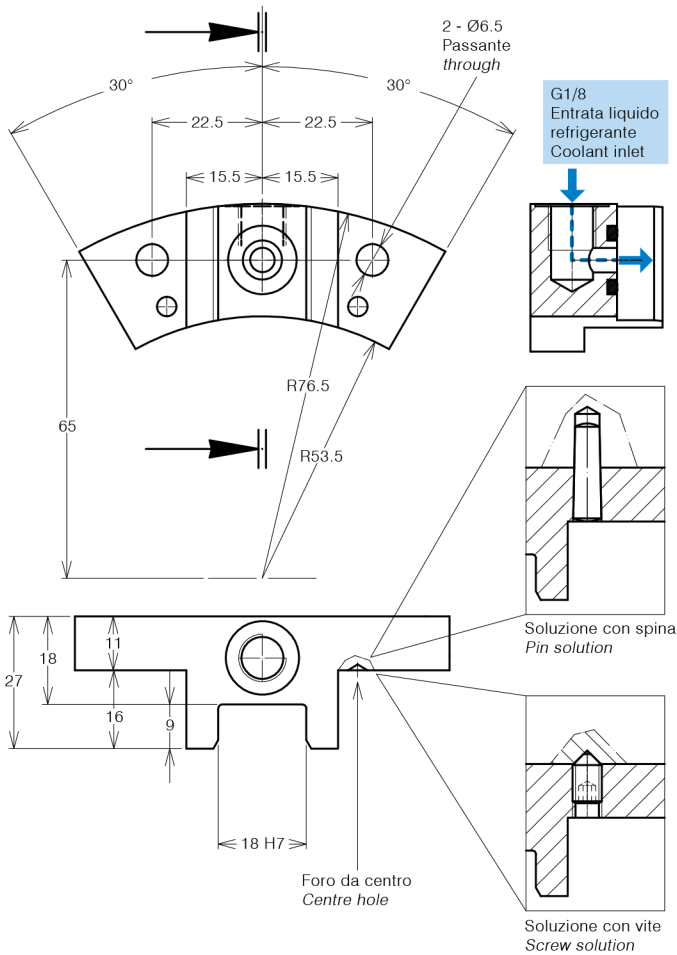
STOP-BLOCK ANTI-ROTANTE CON PASSAGGIO REFRIGERANTE ANTI-ROTATION STOP-BLOCK WITH COOLANT WAY

Lo stop-block previene la rotazione delle teste e assicura una perfetta stabilità, precisione di posizionamento e ripetibilità del cambio utensili automatico. Quando possibile, posizionare il perno della testa dalla parte opposta al mandrino in uscita.

The stop-block avoids the head rotation and ensure a perfect stability, high precision positioning and repeatability of the automatic tool changer. When possible, stop-bar pin 18mm, must be positioned on the opposite side of the angle head output spindle.

Codice Code 311201-025

Codice Code 311201-026

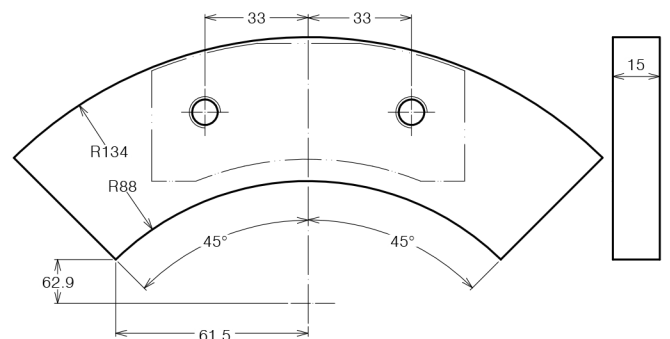
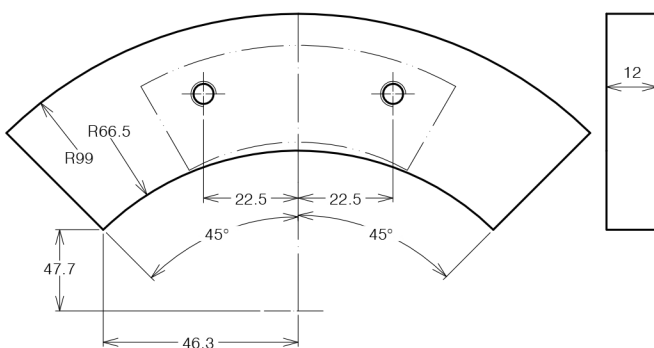


Spessore da adattare Thickness to be adjusted
Codice Code

310702-003

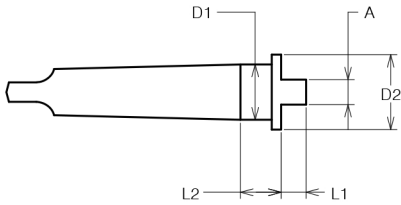
Spessore da adattare Thickness to be adjusted
Codice Code

310702-004



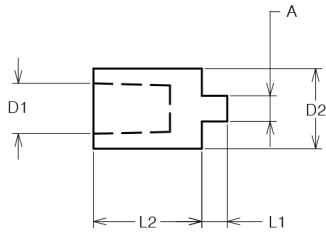


TRASCINATORI IN CM MORSE TAPER DRIVERS



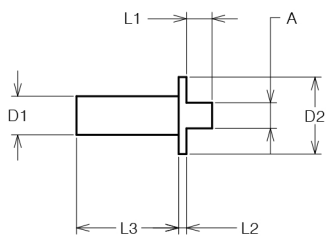
CODICE CODE	D1	D2	A	L1	L2
415101.008	1	24	8	8	11,5
415102.008	2	24	8	8	13
415103.008	3	24	8	8	8
415104.008	4	24	8	8	7,5
415105.008	5	24	8	8	7,5
415102.012	2	34	12	10	13
415103.012	3	34	12	10	13
415104.012	4	34	12	10	14,5
415105.012	5	34	12	10	7,5

TRASCINATORI IN CONO DIN 238 DIN 238 TAPER DRIVERS



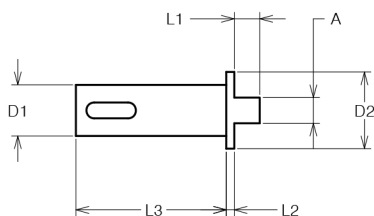
CODICE CODE	D1	D2	A	L1	L2
415210.008	B10	24	8	8	26
415212.008	B12	24	8	8	31
415216.008	B16	25	8	8	34
415218.008	B18	29	8	8	45
415224.008	B24	34,5	8	8	65
415218.012	B18	29,5	12	10	45
415224.012	B24	38	12	10	65

TRASCINATORI PER MANDRINI A PINZA DRIVERS FOR COLLET SPINDLE



CODICE CODE	D1	D2	A	L1	L2	L3
415410.008	10	24	8	8	2,5	25
415412.008	12	24	8	8	2,5	32

TRASCINATORI PER MANDRINI DIN 55058 DRIVERS FOR DIN 55058 SPINDLE



CODICE CODE	D1	D2	A	L1	L2	L3
405312.008	12	24	8	8	2,5	35,5
405316.008	16	24	8	8	2,5	47
405320.008	20	24	8	8	2,5	47
405328.008	28	32	8	8	4	52
405336.008	36	39,5	8	8	4	59
405316.012	16	24	12	10	2,5	47
405320.012	20	29	12	10	2,5	47
405328.012	28	34	12	10	4	52
405336.012	36	39,5	12	10	4	59